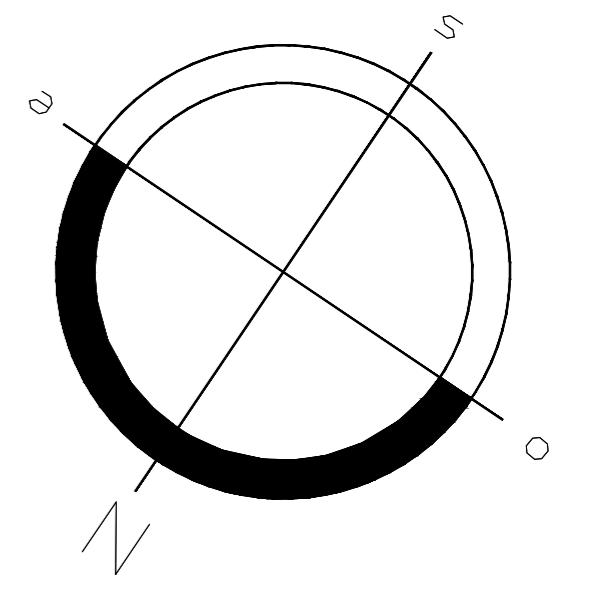
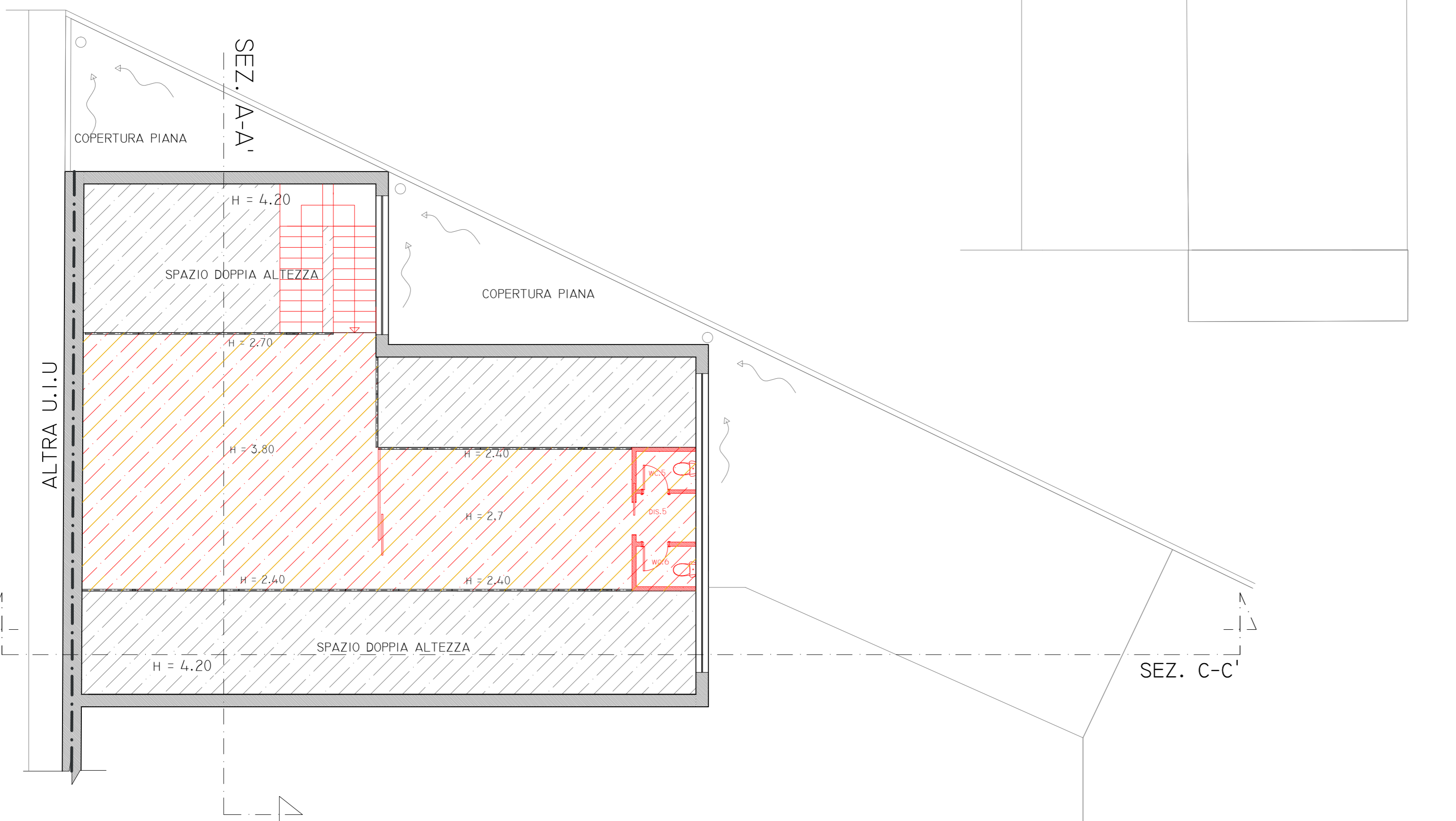
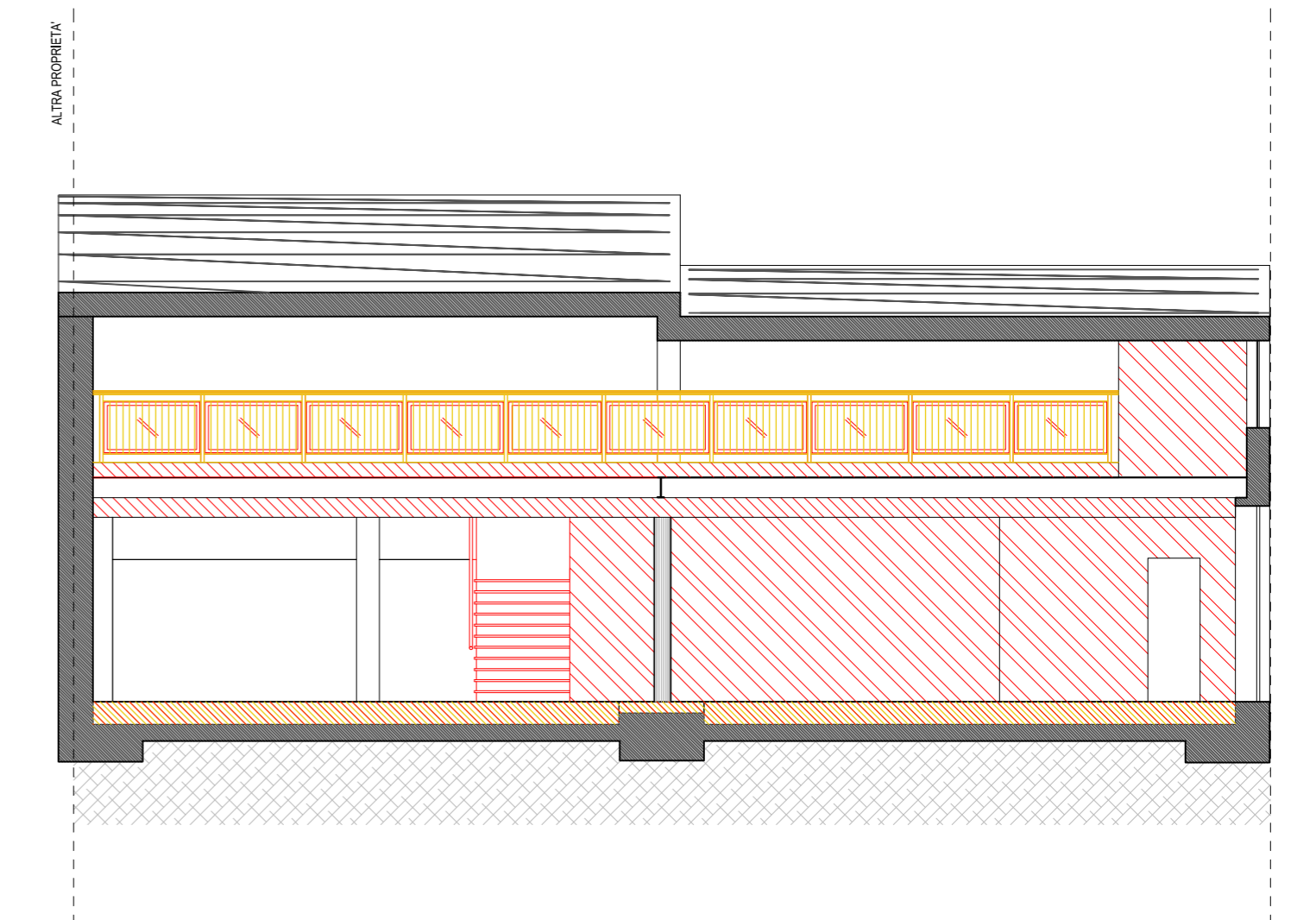
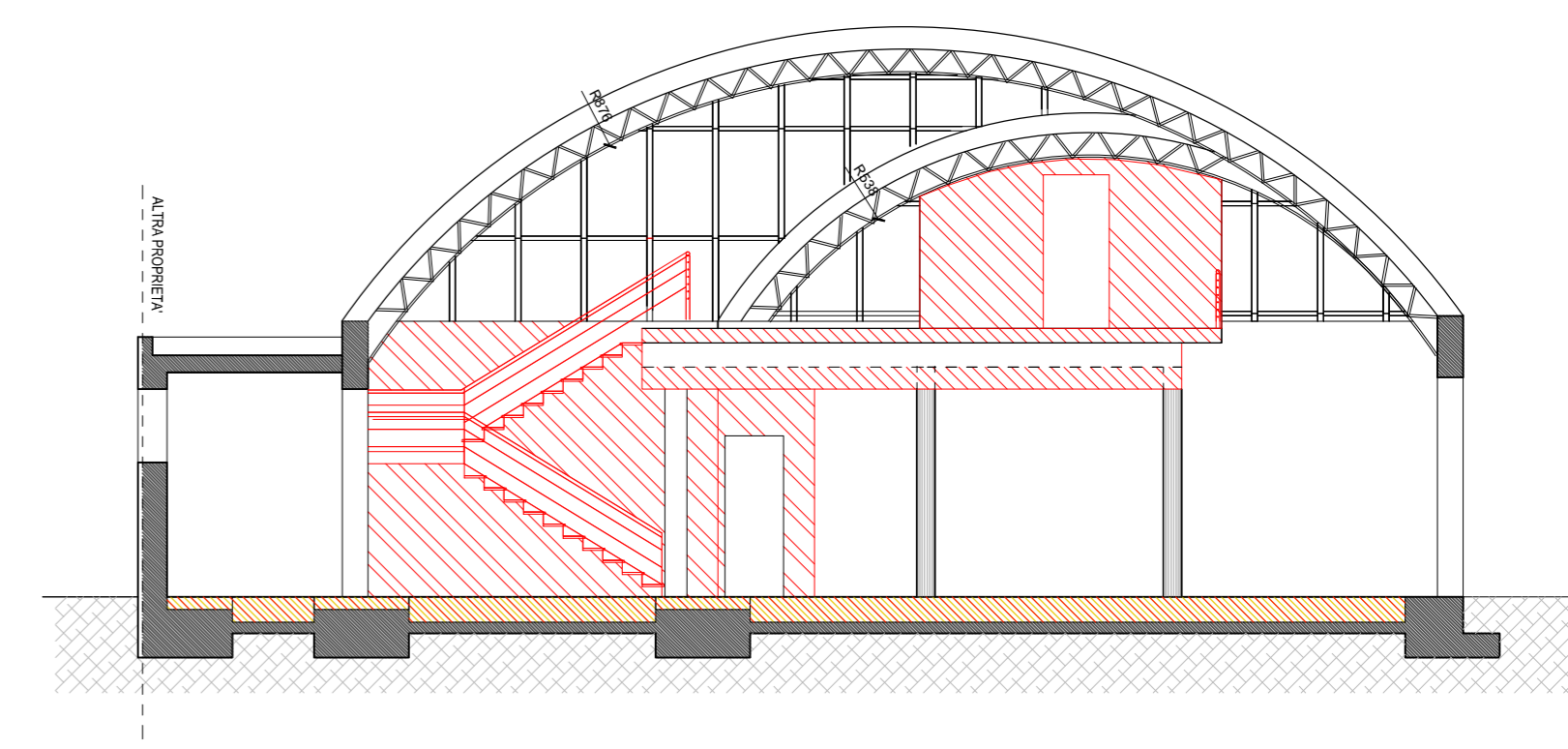
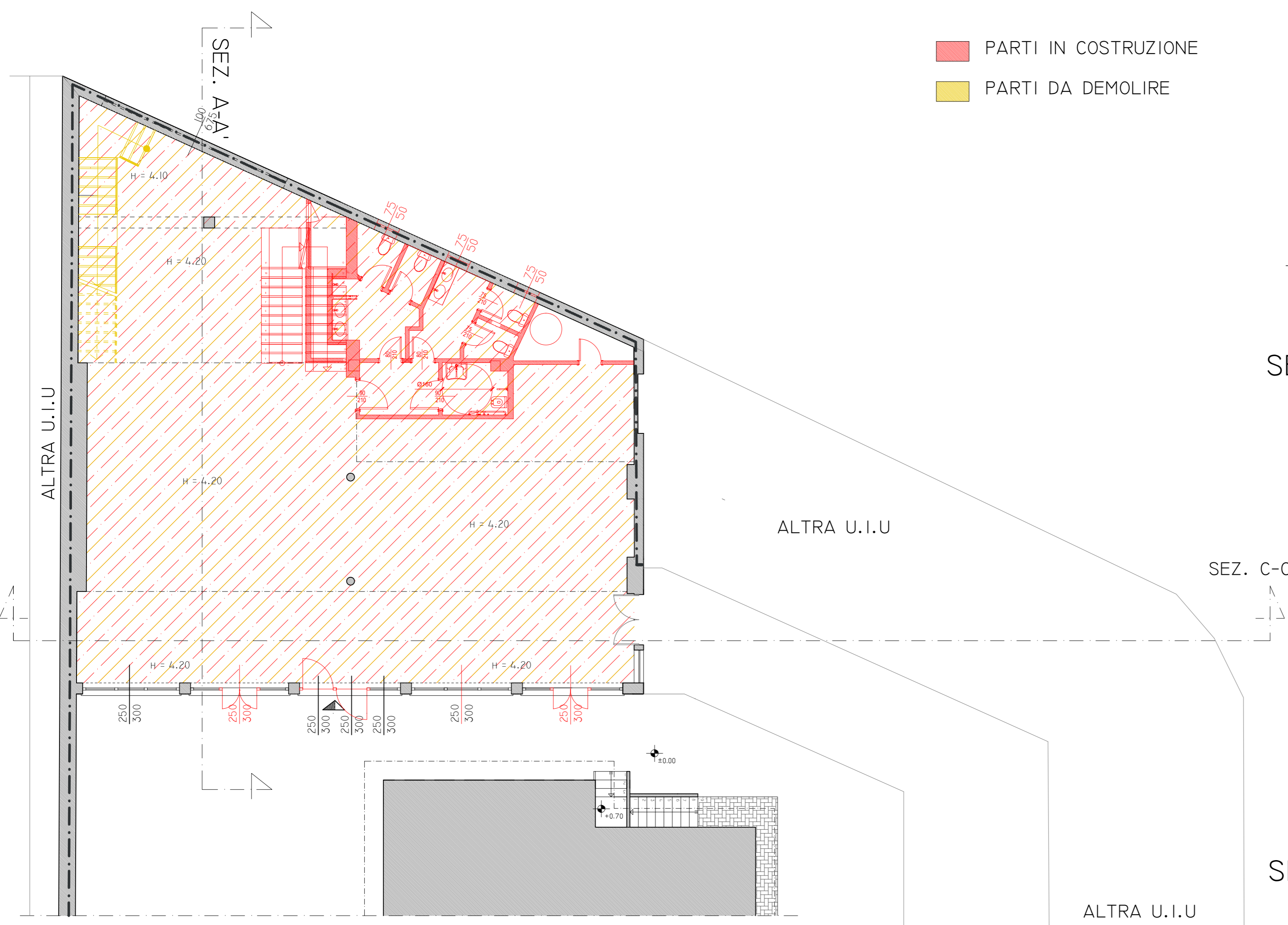


■ PARTI IN COSTRUZIONE
■ PARTI DA DEMOLIRE

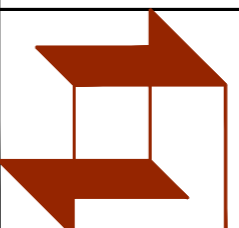


Committente

Progettista

Direttore dei lavori

Impresa

LILLI LIU			ROZZANO	
tav. T 4	data 17/11/2015	scala 1 : 100	loc. RISTRUTTURAZIONE DI IMMOBILE ARTIGIANALE CON CAMBIO DI DESTINAZIONE D'USO E RIQUALIFICAZIONE URBANISTICA DELL'AREA	
PROGETTO	class. RO_P.D.C_02		- Pianta piano terra confronto - Pianta primo piano confronto - Sezione A-A' confronto - Sezione B-B' confronto - Sezione C-C' confronto	
 STUDIO ARCHAM ARCH. ROMANO GARAVAGLIA Via Oberdan n. 13 - Magenta (MI) tel./fax 02/9790286				